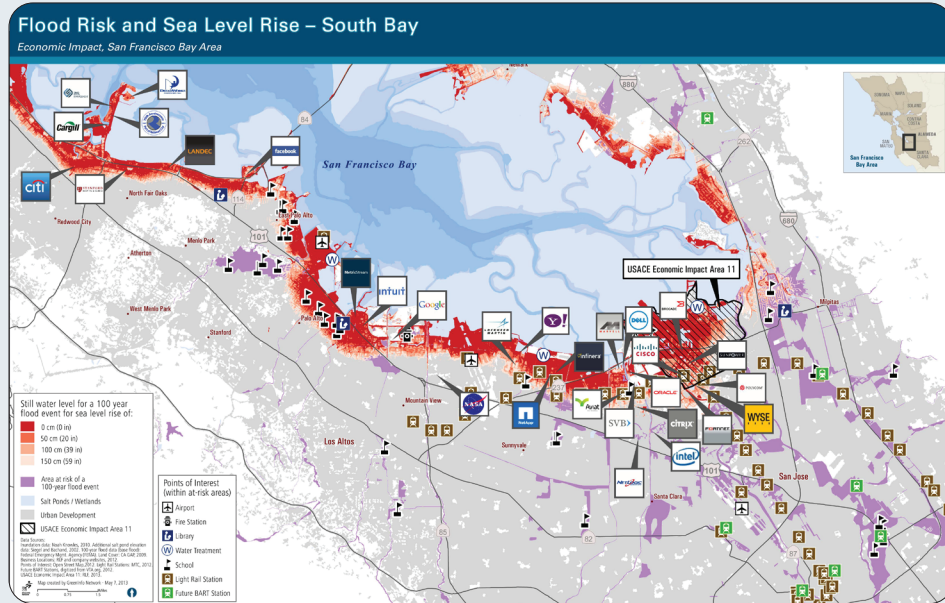


San Francisco Bay Joint Venture partner projects range in type and size from smaller creek projects to the two largest tidal wetland restoration projects on the West Coast of North America. Here we feature three current projects that are advancing SFBJV goals.



### South San Francisco Bay Shoreline Study, Phase 2

This phase of the Shoreline Study will address habitat restoration and enhancement, as well as flood risk reduction for Silicon Valley businesses, residences and other critical infrastructure.

The study will also help implement some of the South Bay Salt Pond Restoration Project's long-term restoration plan and help achieve habitat goals outlined in other regional wetland planning efforts.



**Bay Point Regional Shoreline Restoration and Public Access Project**

In 2020, this project will restore 30 acres of tidal marshlands while providing greater public access and improved resiliency to future sea-level rise in unincorporated Contra Costa County.



**Cullinan Ranch Restoration Project**

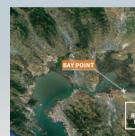
Thanks to a unique partnership between Industry and Conservationists, dredge material from the Richmond Harbor deepening project has been beneficially used to restore 300 new acres of marsh plain in the North Bay at Cullinan Ranch.

### San Francisco Bay Joint Venture Management Board

- Bay Area Audubon Council • Bay Area Mosquito and Vector Control Districts • Bay Area Open Space Council • Bay Conservation and Development Commission • The Bay Institute • Bay Planning Coalition • California State Coastal Conservancy • California Department of Fish and Wildlife • California Department of Water Resources • California Resources Agency • Citizens Committee to Complete the Refuge • Ducks Unlimited • National Audubon Society • National Fish and Wildlife Foundation • NOAA National Marine Fisheries Service • Natural Resources Conservation Service • Pacific Gas and Electric Company • Point Blue Conservation Science • SF Bay Regional Water Quality Control Board • San Francisco Estuary Partnership • Save the Bay • U.S. Army Corps of Engineers • U.S. Environmental Protection Agency • U.S. Fish and Wildlife Service • U.S. Geological Survey • Wildlife Conservation Board



**San Francisco Bay Joint Venture**  
4200 Park Blvd #143 • Oakland, CA 94602  
www.sfbayjv.org  
Tel: 415-699-3586



Check out our video shorts series:  
**Wetland Restoration Is Working**  
www.sfbayjv.org/videos.php

# THE SAN FRANCISCO BAY JOINT VENTURE

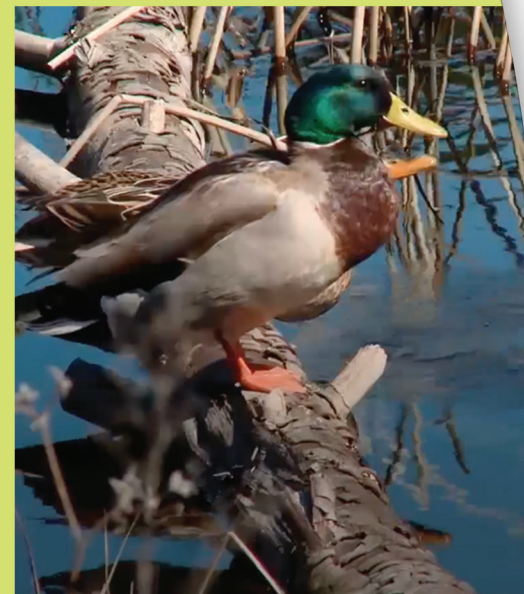
February 2020



Trimtab Media

### A Dynamic Partnership

- SFBJV is protecting and restoring wetland habitats throughout the Bay Area to benefit birds, fish, and other wildlife.
- SFBJV is contributing to clean water, flood control, wildfire management, and storm surge protection while benefitting protected species.
- SFBJV is a partnership with over 100 organizations providing expertise in science, conservation delivery, restoration design, and communications.



Trimtab Media

### A Wise Investment

- While we have lost a staggering 3 billion birds in North America over the last 50 years,\* waterfowl are one of the few species to have increased, thanks in part to partnership-based conservation efforts.
- Nationally, Joint Ventures have demonstrated their ability to leverage non-federal dollars 31:1.
- Dredged sediment can be used to restore habitats for waterfowl and other birds and help wetlands re-establish to protect the shoreline from climate change impacts.

\* *Science Magazine, October 2019*



Judy Irving, Pelican Media

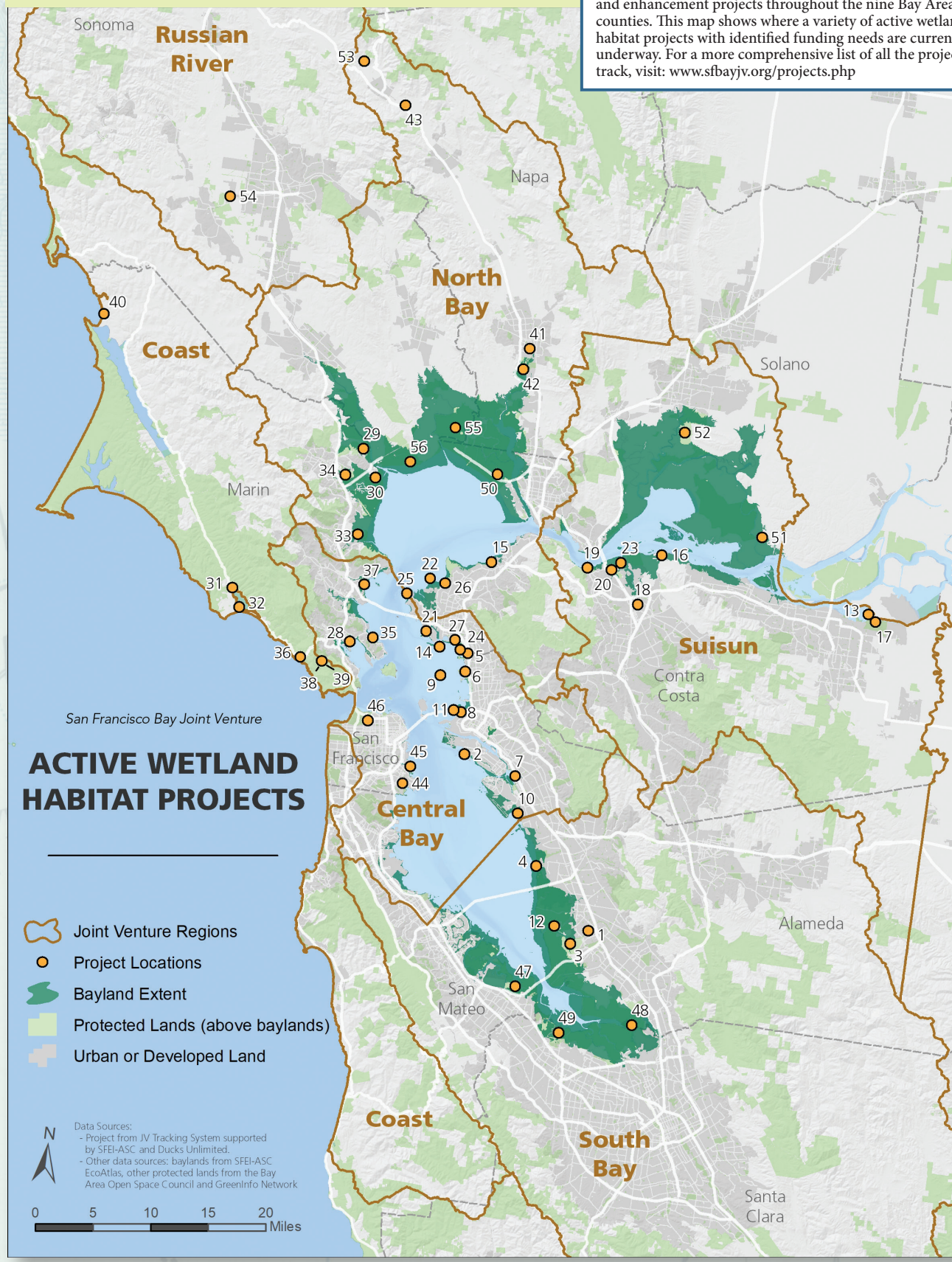
### A Healthy Bay

- From its hills to its coastline, the Bay Area is filled with globally important habitats for birds and other wildlife.
- What is good for the birds is also good for people, the Bay and our regional economy.
- Close to 8 million residents and more than one million people who visit every year all rely on a healthy SF bay and surrounding watershed.

www.sfbayjv.org



The SFBJV tracks and facilitates habitat protection, restoration, and enhancement projects throughout the nine Bay Area counties. This map shows where a variety of active wetland habitat projects with identified funding needs are currently underway. For a more comprehensive list of all the projects we track, visit: [www.sfbayjv.org/projects.php](http://www.sfbayjv.org/projects.php)



## ACTIVE WETLAND HABITAT PROJECTS OF THE SAN FRANCISCO BAY JOINT VENTURE

Projects listed Alphabetically by County

ALAMEDA COUNTY	MAP	ACRES	FUND. NEED	MARIN COUNTY (continued)	MAP	ACRES	FUND. NEED
Alameda Creek Fisheries Restoration	1	NA	\$12,000,000	McInnis Marsh Habitat Restoration	33	180	\$17,500,000
Alameda Point Restoration	2	660	TBD	Novato Deer Island Tidal Wetlands Restoration	34	194	\$7,000,000
Coyote Hills Regional Park - Restoration and Public Access Project	3	306	\$12,000,000	Prey enhancement for sea ducks - a novel approach to subtidal habitat restoration	35	3.8	\$300,000
Hayward Shoreline Habitat Restoration	4	324	\$5,000,000	Redwood Creek Restoration at Muir Beach, Phase 5	36	46	\$8,200,000
Hoffman Marsh Restoration Project - McLaughlin Eastshore State Park	5	40	\$2,500,000	Spinnaker Marsh Restoration	37	17	\$3,000,000
Intertidal Habitat Improvement Project - McLaughlin Eastshore State Park	6	4	\$1,000,000	Tennessee Valley Wetlands Restoration	38	5	\$600,000
Martin Luther King Jr. Regional Shoreline - Water Quality Project	7	200	\$3,000,000	Tiscornia Marsh Restoration	39	16	\$1,500,000
Oakland Gateway Shoreline - Restoration and Public Access Project	8	200	\$12,000,000	Tomales Dunes Wetlands	40	2	\$0
Off-shore Bird Habitat Project - McLaughlin Eastshore State Park	9	1	\$1,500,000	NAPA COUNTY	MAP	ACRES	FUND. NEED
Oyster Bay Regional Shoreline - Tidal Slough Restoration	10	10	\$500,000	Napa River Fish Passage Project	41	NA	\$2,500,000
Radio Beach Expansion Project - McLaughlin Eastshore State Park	11	4	\$1,000,000	Napa River Flood Protection Project	42	1100	\$0
South Bay Salt Ponds: Eden Landing - Southern Eden Landing	12	2500	\$31,840,000	Upper Napa River Restoration Project	43	27	\$1,000,000
CONTRA COSTA COUNTY	MAP	ACRES	FUND. NEED	SAN FRANCISCO COUNTY	MAP	ACRES	FUND. NEED
Big Break Regional Shoreline - Wetland Restoration and Public Access	13	87	\$3,000,000	Candlestick Point -- Yosemite Slough Wetland Restoration	44	34	\$1,300,000
Brooks Island Habitat Improvement Project	14	25	\$1,000,000	Pier 94 -Wetland and Terrestrial Vegetation Management	45	7	\$195,950
Chelsea Wetlands	15	7	\$225,000	Tennessee Hollow: Eastern Tributary	46	5	\$6,000,000
Concord NWS Wetlands Restoration	16	700	\$16,000,000	SAN MATEO COUNTY	MAP	ACRES	FUND. NEED
Dutch Slough	17	1166	\$24,750,000	South Bay Salt Ponds: Ravenswood Complex - Ponds R3, R4, R5, S5	47	673	\$0
Lower Walnut Creek Restoration	18	400	\$8,000,000	SANTA CLARA COUNTY	MAP	ACRES	FUND. NEED
Martinez Regional Shoreline - Marsh Restoration Phase III	19	100	\$2,500,000	South Bay Salt Ponds: Alviso - Island Ponds	48	485	\$0
McNabney Marsh Enhancement Project	20	137	\$6,675,000	South Bay Salt Ponds: Alviso - Mountain View Ponds - A1, A2W	49	742	\$16,000,000
Miller Knox Regional Shoreline - Lagoon and Marsh Restoration	21	35	\$3,000,000	SOLANO COUNTY	MAP	ACRES	FUND. NEED
North Richmond Shoreline - San Pablo Marsh Restoration	22	160	\$5,000,000	Cullinan Ranch	50	290	\$5,000,000
Pacheco Marsh	23	122	\$6,100,000	Montezuma Wetlands Restoration Project	51	1650	\$0
Point Isabel Regional Shoreline - Wetland Restoration and Public Access	24	NA	\$4,000,000	Rush Ranch	52	98	\$498,000
Point Molate Regional Shoreline - Restoration and Public Access Project	25	70	\$4,000,000	SONOMA COUNTY	MAP	ACRES	FUND. NEED
Point Pinole Regional Shoreline - Lower Rheem Creek Restoration	26	25	\$7,000,000	Bidwell Creek Floodplain Enhancement Project	53	4.5	\$200,000
Western Stege Marsh Restoration Program	27	10	\$300,000	Santa Rosa Plain Adopt a Vernal Pool Program	54	NA	\$60,000
MARIN COUNTY	MAP	ACRES	FUND. NEED	Skaggs Island/Haire Ranch Restoration	55	4400	\$200,000,000
Aramburu Island Enhancement Project - Richardson Bay - Phase 3: Revegetation, monitoring, adaptive management	28	NA	\$135,000	Sonoma Creek Tidal Marsh Enhancement to Improve Habitat and Water Quality	56	260	\$250,000
Bahia Restoration Phase 3	29	335	\$90,000	REGIONAL	MAP	ACRES	FUND. NEED
Bel Marin Keys V	30	1904	\$115,000,000	Invasive Sea Lavender Eradication Project		10	\$300,000
Bollinas Lagoon North End Wetland Enhancement/ SLR Adaptation Project	31	482	\$8,000,000	Invasive Spartina Control and Habitat Restoration in San Francisco Bay		70000	\$10,000,000
Kent Island Restoration Project	32	23	\$421,000				

**Total Funding Need (over next 3-5 years): \$578,939,950**